

# THE WEST COAST'S

MOST VALUABLE DEGREE



Oregon State University



# The West Coast's MOST VALUABLE DEGREE

## Career outcomes

OSU GRADUATES EARN  
**\$20,000  
MORE PER YEAR**  
above the average salary of  
graduates from US universities

*U.S. Department of Education  
College Scorecard 2022*

## West Coast location

**450+**  
current students in OPT  
with 66% employed  
on the West Coast

*University Data 2022*

## Research and innovation

**NEARLY HALF A  
BILLION DOLLARS**  
in research funding every year

*University Data 2022*



**TOP 20%**  
BEST PAID GRADUATES  
IN THE US

*PayScale Salary Report 2021*

## OSU is a preferred hiring partner for:

Adidas	Coach	HP	Pixar
Amazon	Dell Inc.	Intel	Tesla
Apple	Deloitte	Nike	
Boeing	Google	Nvidia	

A comprehensive, research-intensive university, OSU is one of only three universities in the US with Land, Sea, Space and Sun-Grant designations.

## #1 Largest Computer Science Program in the US

*American Society for Engineering Education*

**TOP 1.4%**

Global Universities

*Center for World University Rankings 2022*

**#3**

Best Universities Solving  
Climate Change

*successfulstudent.org*

**#59**

Most Innovative School  
in the US

*U.S. News & World Report 2023*



Brijesh, India  
MS in Computer Science

After coming to OSU from Mumbai, Brijesh took advantage of the many resources available to him, gaining valuable experience that would help him succeed after graduation.

- Completed the Graduate Pathway program, scoring an A in all subjects
- Began his program and was hired by a professor as a research assistant
- Started working as a teaching assistant, fully funded with salary and insurance
- Joined OSU's Leadership Academy to visit top companies and network with other engineers
- Graduated and started at Pacific Source as an Associate Software Developer

“ Getting practical knowledge is important here. In India, it's more theoretical. You take a book, and if you score well in an exam, it's a success. But in interviews, they never asked me about my scores; they asked me about my projects and things that I did. They care about your résumé. ”



# The West Coast's MOST VALUABLE

# CAREERS

The world's best companies want the US top graduates. That's why industry leaders like Tesla, INTEL and Nvidia recruit directly through OSU.

100% of international undergraduate students get career support and résumé development opportunities

University Data 2022



INDONESIA

**Vania, BS in Chemical Engineering**  
Global material quality intern at Genentech

*"I recently accepted an internship with a biopharmaceutical company's Global Supplier Quality Team based in California for the next year, starting this summer. I'm really excited to explore my passion in biotech in a department where I can meet people from across many disciplines and cultures!"*



SAUDI ARABIA

**Gufran, BS in Industrial Engineering**  
Lead project management specialist at Baker Hughes

*"When I first came to the United States, I didn't want to just graduate with a degree. I wanted to graduate with an experience. After my experience at Oregon State University and after being part of INTO OSU, I've accomplished my goal."*



TAIWAN

**Han-Ting, MS in Electrical and Computer Engineering**  
Field service engineer for SeqGen

*"During the pandemic, many labs experienced a shortage of human resources and COVID-19 detection analyzers, the real-time PCR machine. Our company not only provides the machine from refurbishment, but also the method of automating the testing process."*



## Internships driven by industry

Get hands-on experience with top companies with the support of our Career Development Center. Engineering, technology and business students can also join MECOP, a prestigious paid internship program exclusive to Oregon. Students in MECOP are placed in two six-month-long internships with different affiliated companies, where they earn between **\$40,000 and \$50,000 as a student.**

### Student spotlight

**Alisha – Kazakhstan**  
BS in Civil Engineering, BS in Sustainability

Through her internship with the prestigious MECOP program, Alisha:

- Connected with professionals
- Earned the salary of a full-time professional
- Worked with top companies in the Pacific Northwest
- Got hands-on workplace experience



*"Working with a company and solving real-world problems is just something different. You will never be able to mimic this environment in a classroom."*

## Career-building projects

Senior engineering students learn to apply their knowledge practically through a three-term course and dedicated mentoring from experienced professionals. The course culminates with creating a final project presented to the public and industry representatives.

**Research and innovation that translates into investments and inventions.** OSU invests in student-led startups, helping them build companies, patent inventions and connect with world leaders in industry.



## Local research with global outcomes

*"The physics of ocean processes can be studied here, but applied elsewhere in the world. There is no difference in the physics, so the process that we study gives us the opportunity to work with anyone in the world."*

Pedro Lomónaco, PhD, OSU civil & construction engineering director

# The West Coast's MOST VALUABLE

# UNDERGRADUATE DEGREE



At OSU, we want you to make the most of your degree. That means getting one-on-one support from the moment you apply to after you graduate. We will help you customize your degree to gain experience, excel in the classroom and stand out when you start your career.



## Pre-arrival support

- Accelerated application processing
- Streamlined application without SAT, ACT, or personal essays
- Priority registration to get you the best-fit classes and schedule
- One-on-one support to answer questions and prepare you for travel

## On-campus support

- Advisors available every day of the term to help with academic questions
- Trips, activities, health and wellness care, and housing support
- Additional tutoring tailored for international students



## Internships and Optional Practice Training (OPT)

- Customizable internships for every major, so you can gain work experience, make industry connections and begin your career with confidence
- One-on-one OPT advisors that work with you to secure employment in the US after graduation
- 70+ STEM programs with a 2-year OPT extension
- Professional clubs that compete nationally for awards and accolades to help you build your résumé
- Thousands of opportunities to join OSU professors' field-leading research teams

## Housing and dining

### Living in the heart of Corvallis

Living on campus gives you convenient access to classes, the library, dining halls and the recreation center, while living among American students in a diverse and welcoming community. All on-campus housing options include a meal plan.

### Living-Learning Communities

Living-Learning Communities (LLCs) are academic programs that partner with residential communities on campus. In addition to living among students in the same major, college, academic focus or program, we hold events in your community that are related to your area of interest.

### Living on campus

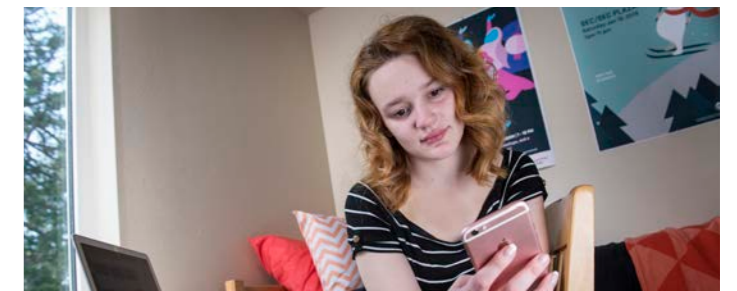
Live-on requirement: All first-year undergraduate students who enroll at OSU within one year of high school graduation must live on campus. Students more than one year past high school graduation are not required to live on campus but may choose to do so.

For more information on this policy, including available exemptions, visit [studentlife.oregonstate.edu/first-year-experience-live-policy](http://studentlife.oregonstate.edu/first-year-experience-live-policy)

## Living on Campus

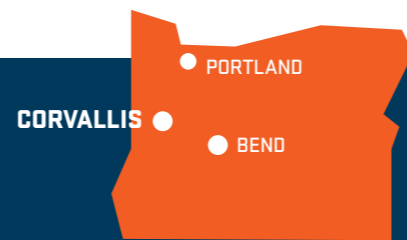
Student type	REQUIRED	NOT REQUIRED
Academic English (AE)		●
International Year One (IYO) / AE + IYO	●*	
Undergraduate first-year students / AE + UG first-year	●*	
Undergraduate Transfer Program (UTP) / AE + UTP	●*	
Master's International Direct (MID)		●
Graduate Pathway (GPW) / AE + GPW		●

\*Students more than one year past high school graduation are not required to live on campus.



**EXPLORE YOUR HOUSING OPTIONS:**  
[intoosu.oregonstate.edu/student-services](http://intoosu.oregonstate.edu/student-services)

# Living in OREGON



## Expand your horizons in Corvallis

- Free tickets to Division I sporting events
- Free public transportation
- Bike friendly
- Vibrant downtown
- Consistently ranked as one of the top college towns in the US

## Experience Oregon

- No sales tax
- Filled with mountains, hiking trails, forests and rivers
- Silicon Forest: home to high-tech companies
- Portland, Oregon listed as one of *Time Magazine's* 2022 World's Greatest Places

## Explore the OSU-Cascades campus

- Additional campus in Bend, OR, a nationally recognized technology and recreation hub for the US
- 30+ undergraduate degrees, minors and options, including two campus-specific majors and specialized internship opportunities
- 100% job placement for computer science graduates

### Travel times by car from Corvallis

- 45 minutes to the Pacific Ocean
- 90 minutes to Portland
- 5 minutes to HP Research Campus

## Bedroom types

**Single room** 1 student per bedroom



**Double room** 2 students per bedroom



**Triple room** 3 students per bedroom



## Bathroom types

**Private** Bathroom for 1 bedroom (1-2 people)



**Shared** Bathroom for multiple bedrooms



**Suite-style** Bathroom for 2-3 bedrooms (2-6 people)



## A return on your investment

\$44,690\* Estimated tuition for full program

# \$300,000+

OPT estimated earnings over three years at \$100,000/year

\*Numbers are estimated and may vary or change. Actual earnings depend on many factors like location, program and industry

## Master of Engineering (MEng)

OSU offers nine coursework-only MEng programs, a project-based degrees for students excited to apply their degrees to careers in the private sector.

- Work with corporate partners to solve their real-world problems
- Research and develop ground-breaking technology and global solutions
- Graduate in 1.5 years and land a job with top companies
- Apply for the STEM OPT extension and continue your career in the US



**\$100,000**  
average starting salary after graduation

# The West Coast's most valuable ENGINEERING DEGREE

[engineering.oregonstate.edu/future-students/graduate](http://engineering.oregonstate.edu/future-students/graduate)

## Electrical and computer engineering

- Choose your focus area, including computer systems and networking, energy systems and robotics
- Find solutions to real-world problems and participate in research projects for industry and government
- Take part in one of nation's top robotics program and stay on the cutting edge of research at the Collaborative Robotics and Intelligent Systems Institute

## Robotic mobility

Imagine if robots had legs and could walk on the same terrain as people. Agility Robotics, a company first developed at OSU, is leading the world in developing bipedal robots. Advanced mobility could change the future by enabling shipping to be more automated and opening up new possibilities in manufacturing, production and rescue services.



## U.S. News & World Report 2022 rankings:

#47 Industrial Engineering

#50 Civil Engineering

#60 Electrical/Electronic/Communications Engineering

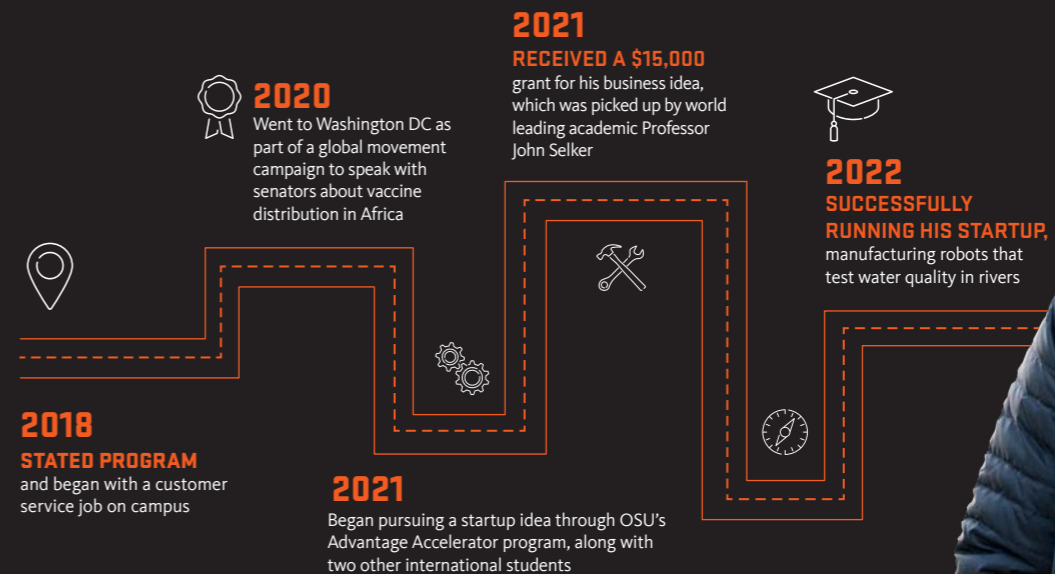
#63 Computer Science

#73 Best Engineering Schools

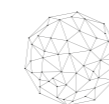
## Student spotlight:

**Nikhil – India and Kenya**  
Mechanical and manufacturing engineering double major  
Class of 2022

*"The facilities at OSU have helped me get hands on experience with a lot of machines such as lathes, mills, 3D printers, laser cutters. And my involvement in the current job I have as a mechanical engineer has helped me develop the practical skills I learned in class."*



## West Coast career connections



### Computer science

- Get your degree in one of the fastest growing fields
- Specialize in a variety of different paths – analyze medical data, create robots, craft AI, mine web traffic, combat cybercrime and much more
- OSU produces more computer science graduates than any other university in the US, which means more specialization, better industry connections and international recognition



### Business analytics

- Prepare to join a rapidly growing, data-driven field
- Study digital marketing, human resources, international business and market research
- Learn through hands-on experience and graduate with strong technical skills



*"I got a full-time offering in a Big Four company with a decent salary, and I think that's going to support me a lot. I start strong and now I can end strong at OSU."*

Snowy, Vietnam  
BS in Accounting





# Undergraduate Transfer Program

Have you earned credits from another college or university and want to transfer to a US university? You can transfer directly into Oregon State University or choose our Undergraduate Transfer Program (UTP), which is specifically designed to support international students through the process of transferring.

## Why Choose UTP?

Choosing UTP provides a customized path to your bachelor's degree. Before your program starts, Oregon State University will provide you with an estimate of credits that will transfer to the university. Once you arrive on campus, our friendly staff will be available to help you transition into life at a US university. You will also have access to helpful resources, including academic, English language and cultural support. If you do not meet the English language entry requirements for the UTP, you can enter our Academic English program before progressing to either the UTP or direct transfer to Oregon State University.

## UTP Benefits:

- Transfer of credits from your college or university-level classes
- Receive customized curriculum of university credit-bearing courses
- Quick turnaround time for offer (5-7 business days)
- Unofficial Pre-arrival Credit Evaluation (15 additional business days after receiving offer letter)
- Guaranteed progression to any undergraduate program upon successful completion of your UTP
- Academic advising throughout the program, including progression and student success advisors

Entry Requirements		
Entry requirements are subject to change and may vary by program.		
Program	Direct Transfer	Undergraduate Transfer Program
Program Length	N/A	1-Term, 2-Term, 3-Term or 4-Term
Start Dates	Fall 2023: Sep 2023 Winter 2024: Jan 2024 Spring 2024: Mar 2024 Summer 2024: Jun 2024	Fall 2023: Sep 20, 2023 Winter 2024: Jan 3, 2024 Spring 2024: Mar 26, 2024 Summer 2024: Jun 18, 2024
GPA	2.25-2.49 college/university GPA (College Math course completed with C-)  2.50+ college/university GPA (College Math course not required)  If transferring from a US-accredited college/university, Writing 121 OSU course equivalent completed with C- or better. If transferring from a non-US-accredited college or university, then no Writing 121 OSU course equivalent is required.	2.25
TOEFL iBT	80 (minimum 16 subscores)	50-75
IELTS	6.5	5.0-6.0
Other	<ul style="list-style-type: none"> <li>• Two English composition courses from a recognized college or university in the US with grades C- or better</li> <li>• One English composition and one speech communication course with grades C- or better</li> <li>• Level 6 Academic English completion with C/Pass or higher in all classes</li> </ul>	N/A
Duolingo	110	75-110
Minimum Transfer Credits	24 per quarter (16 per semester) credits	15 per quarter (12 per semester) credits from a recognized college or university
Maximum Transfer Credits	No limit	No limit

## Start Dates

	Fall 2023: Sep 20, 2023	Winter 2024: Jan 3, 2024	Spring 2024: Mar 26, 2024	Summer 2024: Jun 18, 2024
Business	●●	●●	●●	●●
Computer Science	●●	●●	●●	●●
Design, Apparel and Merchandising Management	●●	●●	●●	●●
Engineering	●●	●●	●●	●●
Environmental Economics and Policy	●●	●●	●●	●●
Exercise and Sport Science	●●	●●	●●	●●
Food Science and Technology	●●	●●	●●	●●
Forestry	●●	●●	●●	●●
General	●●●●	●●●●	●●●●	●●●●
Mathematics	●●	●●	●●	●●
Natural Resources and Renewable Materials	●●	●●	●●	●●
Psychology	●●	●●	●●	●●
Public Policy	●●	●●	●●	●●
Science	●●	●●	●●	●●
Women and Gender Studies	●●	●●	●●	●●

● 1-Term ● 2-Term ● 3-Term ● 4-Term

# Graduate Admissions

OSU offers more than 100 graduate programs, many of which are ranked among the top in the nation. There are several different paths to begin earning your degree.

How you start your program depends on your academic profile and your English level. How you finish your program is exactly how you pictured: graduating with a master's or PhD from OSU.

**Direct Entry:** If you meet the academic and English language requirements for your degree program, you can apply directly to OSU.

To apply, you may need the following required documents: declarations, university transcripts, proof of degree, accounting of time, passport and English test score. An application fee may also apply.

The graduate admissions process is competitive, and an extensive review of your application will be done. Please expect a longer turnaround for an admissions decision. For more information, visit [gradschool.oregonstate.edu/admissions/after-you-apply](https://gradschool.oregonstate.edu/admissions/after-you-apply)

**Master's International Direct:** Our Master's International Direct route gives you direct access into your degree program with additional support in the first term. The admissions process is non-competitive, has no application fees and does not require additional test scores. More information on the following pages.

**Graduate Pathway:** Our Graduate Pathways allow you to begin earning credits toward your degree even if you do not meet the academic and English requirements for direct entry. The program will help build the academic foundation and essential English language skills you need to succeed in your master's degree. View program-specific entry requirements at [www.intostudy.com/osu/programs](http://www.intostudy.com/osu/programs)

**Academic English Language Program:** If you do not meet the direct or Graduate Pathway program entry language requirements, you can enter our Academic English program to improve your academic and language skills. Once you have achieved the required language level, you can progress to a Graduate Pathway program or enter your degree program directly. Learn more on page 20.

Program	Direct		Graduate Pathway		
	Direct Entry**	MID*	1-Term	2-Term	3-Term
Program requirements	<ul style="list-style-type: none"> <li>• See gradschool.oregonstate.edu/programs for specific program entry requirements</li> <li>• Additional requirements may include standardized tests like the GMAT or GRE</li> <li>• The degree program you select may have additional requirements</li> </ul>	<ul style="list-style-type: none"> <li>• Undergraduate degree in relevant discipline (undergraduate degree in any discipline for MSB)</li> <li>• For additional requirements, please see chart on page 15</li> </ul>	Undergraduate degree in relevant discipline (undergraduate degree in any discipline for MSB/MBA/MPH)		
Minimum GPA Equivalent	3.0	3.0	3.0	2.5	2.5
TOEFL iBT	91 (18 minimum subscores)	80 (18 subscores)	85 (16 subscores)	80 (16 subscores)	70
IELTS	7.0	6.5 (5.5 subscores)	6.5 (6.0 subscores)	6.5 (5.5 subscores)	6.0
Duolingo	130 (must include subscores)	110	120	110	95
Academic English	N/A	N/A	N/A	Level 6	Level 5

**Notes:** \*All entry requirements are subject to change and may vary by program. In addition to meeting minimum admission requirements, you may also need to meet specific program requirements.

\*\*These English requirements are for direct entry to graduate degree programs that have a Graduate Pathway option. English requirements for direct entry to all other graduate programs can be found on the Graduate School website: <https://gradschool.oregonstate.edu/admissions/international#english-language>

Institutional Code TOEFL: 4586 GRE: 4586 GMAT: PW4-DR-05

## Dates

Program	Direct		Graduate Pathway
	Direct Entry	MID	
Start Dates	Fall 2023: Sep 2023 Winter 2024: Jan 2024 Spring 2024: Mar 2024 Summer 2024: Jun 2024	Fall 2023: Sep 18, 2023 Winter 2024: Jan 4, 2024 Spring 2024: Mar 28, 2024 Summer 2024: Jun 20, 2024	Fall 2023: Sep 20, 2023 Winter 2024: Jan 3, 2024 Spring 2024: Mar 26, 2024 Summer 2024: Jun 18, 2024

Program start dates vary in availability; view chart on pages 15-17 for more information

## [Sample Graduate Pathway Program] MS Business

3-Term	Degree Program Components	Program Information
Fall: Sep 20, 2023 Winter: Jan 3, 2024	45 credit hour program 15 credit hours from Pathway apply to degree 30 credit hours remaining toward degree	
<b>Entry Requirements</b>	<b>Term 1 Course Title Credit Hours</b>	<b>Progression Requirements</b>
<ul style="list-style-type: none"> <li>• 2.5 GPA</li> <li>• Undergraduate degree in a relevant discipline</li> </ul>	<b>ALS 165 Technical Communication For International Graduate Students 3</b> <b>ALS 174 Professional Writing for Grad Business Students 3</b> ALS 145 Building Strategies for Graduate Success 3 COMM 111 Public Speaking 3	<ul style="list-style-type: none"> <li>• 3.0 GPA cumulative and B or higher grades in all graduate level classes</li> <li>• B or higher grade in all English language classes or TOEFL 91 (18 subscores) or IELTS 7.0</li> </ul>
<b>Language Requirements</b>	<b>Total 12</b>	<b>Notes</b>
<ul style="list-style-type: none"> <li>• TOEFL iBT 70 or</li> <li>• IELTS 6.0 or</li> <li>• Duolingo 95</li> </ul>	<b>Term 2 Course Title Credit Hours</b>	<ul style="list-style-type: none"> <li>• BA 512 is required for Pathway students but does not apply to MSB program requirements.</li> <li>• These courses are generally delivered through the INTO OSU Center and are for Pathway students only.</li> </ul>
	BA 512 Business Analysis and Communication 6 BA 515 Managerial Decision Tools 3 COMM 218 Interpersonal Communication 3	
	<b>Total 12</b>	
	<b>Term 3 Course Title Credit Hours</b>	
	BA 513 Business Legal Environment 3 BA 514 Operations Management 3 BA 516 Creating Value in Exchange 3 BA 517 Markets and Valuation 3	
	<b>Total 12</b>	

[business.oregonstate.edu](http://business.oregonstate.edu)



# The INTO Oregon State University advantage

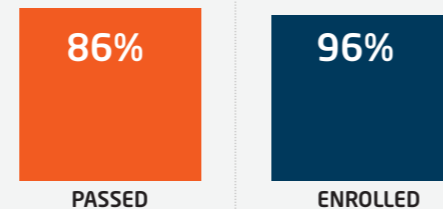
**INTO OSU is one of the oldest and most integrated programs of its type in the US.** OSU's commitment to international education is evident in the purpose-built, five-story International Living-Learning Center. The center is a vibrant global hub of student life and educational activity which also houses the INTO OSU Center.

INTO OSU provides services such as:

- Personalized academic, language and cultural support
- Targeted tutoring and self-study learning support resources
- Your own academic success and personal advisor
- Comprehensive orientation with free airport pickup
- English Conversation Partner Program
- Social events and trips around Oregon
- 100+ INTO OSU and OSU staff and teachers to support students

## INTO OSU success

Undergraduate and Graduate Progression Rate 2020-2021



**86% of students successfully completed the pathway program** and qualified for admission as degree-seeking students. **Of those students, 96% enrolled at Oregon State University.**

## Master's International Direct (MID)

**Here to support you through a journey of success.** At OSU, we've been leading the way for international student support and success in the US. Throughout the years, we've helped international students grow to become leaders in their social and academic communities as they gather the experiences that build their futures.

**With Master's International Direct,** you are entering directly into an OSU graduate program. From selecting and registering for the right academic courses to accessing jobs, internships and other opportunities through our on-campus resources—we will be there for you every step of the way. You will be working with world-class faculty to create your best work while gaining the customized support to carry you through the international student journey. MID gives you the opportunity to prepare for your future career, building connections and a professional network with global companies. As an MID student, you will receive extra support including:



### International academic advising

From the day you confirm, your advisors will support you with early registration, making sure you have access to the course options to achieve your personal goals. They will work closely with you throughout your first term to help you adapt to a new educational environment and keep you on track for an on-time graduation.



### Comprehensive international support

From your first days, we provide pre-arrival advice, arrival support and acclimation orientations after arrival. Once you're on campus, the support doesn't end. You will have access to cultural assistance and community-building experiences to help you integrate on campus and build connections with friends and faculty.

## MID Programs

\*Estimated credits remaining after Pathway/Total credit hours needed to complete degree.

Terms	Start Dates				Credits*	GPA	Entry Requirements	TOEFL	Duolingo	IELTS
	Fall	Winter	Spring	Summer						
<b>Bioengineering</b>										
1-Term (MID)	•				35-37/45	3.0	• Undergraduate degree in relevant discipline • 2.0 in 1 year of college level Math	80 (18 subscores)	110	6.5 (5.5 subscores)
<b>Chemical Engineering</b>										
1-Term (MID)	•				35-37/45	3.0	• Undergraduate degree in relevant discipline • Math through Differential Equations; Chemistry including General, Organic, and Physical; 1 year of Physics • Completion of following courses with a 3.0 average: Fluid Mechanics; Thermodynamics; Heat and Mass Transfer; Chemical Reaction Engineering	80 (18 subscores)	110	6.5 (5.5 subscores)
<b>Civil Engineering</b>										
1-Term (MID)	•				35-37/45	3.0	• Undergraduate degree in relevant discipline • Completion of 3 out of 5 of following courses with a grade equivalent to a 3.0 in each individual course: Engineering Statistics; Engineering Dynamics; Strength of Materials; Structural Analysis; Steel or Concrete Design	80 (18 subscores)	110	6.5 (5.5 subscores)
<b>Computer Science</b>										
1-Term (MID)	•	•	•		35-37/45	3.0	• Undergraduate degree in relevant discipline; • 2.0 GPA in 1 year of college level Math; Complete 3/6 upper-division courses with a grade equivalent to a 3.0 in each individual course: Algorithm Design and Analysis; Computer Organization or Architecture; Operating; Automata Theory/Theory of Computation; Programming Language Fundamentals; Compilers	80 (18 subscores)	110	6.5 (5.5 subscores)
<b>Electrical and Computer Engineering</b>										
1-Term (MID)	•	•	•		35-37/45	3.0	• Undergraduate degree in relevant discipline; • 2.0 GPA in 1 year of Calculus; • 2.0 GPA in 1 year of Physics; • Complete 3/6 courses with a grade equivalent to a 3.0 in each individual course: AC/DC Circuits/Circuits Analysis; Signals and Systems; Electricity and Magnetism; Power*; Computer Engineering*; Materials and Devices*. *taken in 3rd or 4th year of UG study.	80 (18 subscores)	110	6.5 (5.5 subscores)
<b>Environmental Engineering</b>										
1-Term (MID)	•				35-37/45	3.0	• Undergraduate degree in relevant discipline • Math through Differential Equations; 1 year of Physics; 1 year of General Chemistry • Completion of 1 of 3 courses below with a 3.0 average: Introduction to Environmental Engineering; Water and Wastewater Treatment; Mass and Energy Balances	80 (18 subscores)	110	6.5 (5.5 subscores)
<b>Environmental Sciences</b>										
1-Term (MID)	•	•	•		35-37/45	3.0	• Undergraduate degree in relevant discipline	80 (18 subscores)	110	6.5 (5.5 subscores)
<b>Industrial Engineering</b>										
1-Term (MID)	•				35-37/45	3.0	• Undergraduate degree in Industrial Engineering, Manufacturing Engineering, or Mechanical Engineering • 2.0 GPA in 1 year college level Math • Completion of all courses below with a 3.0 average: Programming Language Fundamentals; Statistics; Production Engineering/Production Management; Facilities Design/Facilities Planning	80 (18 subscores)	110	6.5 (5.5 subscores)
<b>MS Business</b>										
1-Term (MID)	•	•	•	•	35-37/45	3.0	• Undergraduate degree in any discipline for winter, spring and summer start terms, Undergraduate degree in Business/Economics/STEM degree for fall start term	80 (18 subscores)	110	6.5 (5.5 subscores)

Entry requirements are subject to change and may vary by program.

[Sample MID First Term] Master's International Direct in Bioengineering				
1-Term MID	First Term Components			Program Information
Fall: September 18, 2023	45 credit hour program			
<b>Entry Requirements</b>	<b>Term 1</b>	<b>Course Title</b>	<b>Credit Hours</b>	<b>Additional Information</b>
• 3.0 overall GPA, undergraduate degree in relevant discipline	ALS 145	Building Strategies for Grad Success	3	Academic grid shown is a sample of MID coursework. Please speak with your Academic Advisor to learn more about the availability of courses in your chosen program. <b>Note:</b> Entry requirements are subject to change and may vary by program. Besides meeting minimum admission requirements, you also must meet specific program requirements
<b>Additional Entry Requirements</b>	BIOE 5XX	Modeling of Physiological Systems	4	
• 2.0 GPA in 1 year of college level Math	CHE 525	Chemical Engineering Analysis	4	
• Language Requirements	ENGR 520	Department student review for selected course X	3	
• TOEFL 80 (18 subscores)				
• IELTS 6.5 (5.5 subscores)				
	<b>Total 14</b>			

[cbee.oregonstate.edu](http://cbee.oregonstate.edu)

# Graduate Pathway Programs

\*Estimated credits remaining after Pathway/Total credit hours needed to complete degree.  
 \*\*For English Language tests subscores, please see entry requirements table on page 13.

Term	Start Dates				Credits*	Entry Requirements**					Progression Requirements	
	Fall	Winter	Spring	Summer		GPA	Undergraduate degree <sup>1</sup>	TOEFL iBT	IELTS	Duolingo	GPA	Other
<b>Applied Economics</b>												
3-Term	•				30/45	2.5	Undergraduate degree in a relevant discipline	70	6.0	95	3.0	<ul style="list-style-type: none"> <li>B or higher grades in all graduate level classes</li> <li>B or higher grade in all English language classes OR TOEFL 91 (18 subscores) OR IELTS 7.0</li> <li>Earn at least 15 graduate-level credits</li> </ul>
2-Term		•			30/45			80	6.5	110		
<b>Bioengineering</b>												
3-Term	•				30/45	2.5	Undergraduate degree in a relevant discipline	70	6.0	95	3.0	<ul style="list-style-type: none"> <li>B or higher grades in all graduate level classes</li> <li>B or higher grade in all English language classes OR TOEFL 91 (18 subscores) OR IELTS 7.0</li> <li>Earn at least 15 graduate-level credits</li> </ul>
2-Term		•			30/45			80	6.5	110		
<b>Biostatistics</b>												
3-Term	•				44/59	2.5	Undergraduate degree in a relevant discipline	70	6.0	95	3.0	<ul style="list-style-type: none"> <li>B or higher grades in all graduate level classes</li> <li>B or higher grade in all English language classes OR TOEFL 91 (18 subscores) OR IELTS 7.0</li> <li>Earn at least 15 graduate-level credits</li> </ul>
2-Term		•			44/59			80	6.5	110		
<b>Business Administration</b>												
3-Term	•	•			45/60	2.5	Undergraduate degree in any discipline	70	6.0	95	3.0	<ul style="list-style-type: none"> <li>B or higher grades in all graduate level classes</li> <li>B or higher grade in all English language classes OR TOEFL 91 (18 subscores) OR IELTS 7.0</li> <li>GMAT 500 with minimum 20th percentile in verbal, quantitative and integrated reasoning, and a minimum analytical writing score of 4 OR GRE total score of 304 with verbal and quantitative scores in at least the 30th percentile and an analytical writing score of 3.5</li> <li>2 and 3-term earn at least 15 graduate-level credits</li> </ul>
2-Term		•	•		45/60			80	6.5	110		
1-Term	•	•	•	•	50-51/60	3.0	Undergraduate degree in Business	85	6.5	120		
<b>Chemical Engineering</b>												
3-Term	•				30/45	2.5	Undergraduate degree in a relevant discipline	70	6.0	95	3.0	<ul style="list-style-type: none"> <li>B or higher grades in all graduate level classes</li> <li>B or higher grade in all English language classes OR TOEFL 91 (18 subscores) OR IELTS 7.0</li> <li>Earn at least 15 graduate-level credits</li> </ul>
2-Term		•			30/45			80	6.5	110		
<b>Civil Engineering</b>												
3-Term				•	30/45	2.5	Undergraduate degree in a relevant discipline	70	6.0	95	3.0	<ul style="list-style-type: none"> <li>B or higher grades in all graduate level classes</li> <li>B or higher grade in all English language classes OR TOEFL 91 (18 subscores) OR IELTS 7.0</li> <li>Earn at least 15 graduate-level credits</li> </ul>
2-Term	•				30/45			80	6.5	110		
<b>Comparative Health Sciences</b>												
3-Term	•			•	30/45	2.5	Undergraduate degree in a relevant discipline	70	6.0	95	3.0	<ul style="list-style-type: none"> <li>B or higher grades in all graduate level classes</li> <li>B or higher grade in all English language classes OR TOEFL 91 (18 subscores) OR IELTS 7.0</li> <li>3 and 2-term earn at least 15 graduate-level credits</li> </ul>
2-Term	•	•			30/45			80	6.5	110		
1-Term	•	•	•		35-36/45	3.0		85	6.5	120		
<b>Computer Science</b>												
3-Term	•				30/45	2.5	Undergraduate degree in a relevant discipline	70	6.0	95	3.0	<ul style="list-style-type: none"> <li>B or higher grades in all graduate level classes</li> <li>B or higher grade in all English language classes OR TOEFL 91 (18 subscores) OR IELTS 7.0</li> <li>Earn at least 15 graduate-level credits</li> </ul>
2-Term	•	•			30/45			80	6.5	110		
<b>Electrical and Computer Engineering</b>												
3-Term	•				30/45	2.5	Undergraduate degree in a relevant discipline	70	6.0	95	3.0	<ul style="list-style-type: none"> <li>B or higher grades in all graduate level classes</li> <li>B or higher grade in all English language classes OR TOEFL 91 (18 subscores) OR IELTS 7.0</li> <li>Earn at least 15 graduate-level credits</li> </ul>
2-Term	•	•			30/45			80	6.5	110		
<b>Environmental Engineering</b>												
3-Term	•				30/45	2.5	Undergraduate degree in a relevant discipline	70	6.0	95	3.0	<ul style="list-style-type: none"> <li>B or higher grades in all graduate level classes</li> <li>B or higher grade in all English language classes OR TOEFL 91 (18 subscores) OR IELTS 7.0</li> <li>Earn at least 15 graduate-level credits</li> </ul>
2-Term		•			30/45			80	6.5	110		
<b>Environmental Sciences</b>												
3-Term	•			•	30/45	2.5	Undergraduate degree in a relevant discipline	70	6.0	95	3.0	<ul style="list-style-type: none"> <li>B or higher grades in all graduate level classes</li> <li>B or higher grade in all English language classes OR TOEFL 91 (18 subscores) OR IELTS 7.0</li> <li>Earn at least 15 graduate-level credits</li> </ul>
2-Term	•	•			30/45			80	6.5	110		
<b>Global Health</b>												
3-Term	•				45/60	2.5	Undergraduate degree in a relevant discipline	70	6.0	95	3.0	<ul style="list-style-type: none"> <li>B or higher grades in all graduate level classes</li> <li>B or higher grade in all English language classes OR TOEFL 91 (18 subscores) OR IELTS 7.0</li> <li>3 and 2-term earn at least 15 graduate-level credits</li> </ul>
2-Term		•			45/60			80	6.5	110		
1-Term			•		50-51/60	3.0		85	6.5	120		
<b>Health Promotion and Health Behavior</b>												
3-Term	•				45/60	2.5	Undergraduate degree in a relevant discipline	70	6.0	95	3.0	<ul style="list-style-type: none"> <li>B or higher grades in all graduate level classes</li> <li>B or higher grade in all English language classes OR TOEFL 91 (18 subscores) OR IELTS 7.0</li> <li>Earn at least 15 graduate-level credits</li> </ul>

Entry and progression requirements are subject to change and may vary by program.  
<sup>1</sup>Departments may be looking for specific prerequisite courses in determining relevant undergraduate degree for admissibility to the Graduate Pathway Program.

Term	Start Dates				Credits*	Entry Requirements**					Progression Requirements	
	Fall	Winter	Spring	Summer		GPA	Undergraduate degree <sup>1</sup>	TOEFL iBT	IELTS	Duolingo	GPA	Other
<b>Industrial Engineering</b>												
3-Term	•				30/45	2.5	Undergraduate degree in a relevant discipline	70	6.0	95	3.0	<ul style="list-style-type: none"> <li>B or higher grades in all graduate level classes</li> <li>B or higher grade in all English language classes OR TOEFL 91 (18 subscores) OR IELTS 7.0</li> <li>Earn at least 15 graduate-level credits</li> </ul>
2-Term	•	•			30/45			80	6.5	110		
<b>MS Business</b>												
3-Term	•	•			30/45	2.5	Undergraduate degree in a relevant discipline	70	6.0	95	3.0	<ul style="list-style-type: none"> <li>B or higher grades in all graduate level classes</li> <li>B or higher grade in all English language classes OR TOEFL 91 (18 subscores) OR IELTS 7.0</li> <li>Earn at least 15 graduate-level credits</li> </ul>
2-Term		•	•		30/45			80	6.5	110		
<b>Materials Chemistry</b>												
3-Term	•				30/45	2.5	Undergraduate degree in a relevant discipline	70	6.0	95	3.0	<ul style="list-style-type: none"> <li>B or higher grades in all graduate level classes</li> <li>B or higher grade in all English language classes OR TOEFL 91 (18 subscores) OR IELTS 7.0</li> <li>3-term earn at least 15 graduate-level credits</li> </ul>
1-Term	•				35-36/45			3.0		85		
<b>Mathematics</b>												
3-Term				•	30/45	2.5	Undergraduate degree in a relevant discipline	70	6.0	95	3.0	<ul style="list-style-type: none"> <li>B or higher grades in all graduate level classes</li> <li>B or higher grade in all English language classes OR TOEFL 91 (18 subscores) OR IELTS 7.0</li> <li>Earn at least 15 graduate-level credits</li> </ul>
2-Term	•				30/45			80	6.5	110		
<b>Mechanical Engineering</b>												
3-Term	•				30/45	2.5	Undergraduate degree in a relevant discipline	70	6.0	95	3.0	<ul style="list-style-type: none"> <li>B or higher grades in all graduate level classes</li> <li>B or higher grade in all English language classes OR TOEFL 91 (18 subscores) OR IELTS 7.0</li> <li>3 and 2-term earn at least 15 graduate-level credits</li> </ul>
2-Term	•	•			30/45			80	6.5	110		
1-Term	•	•	•		35-36/45	3.0		85	6.5	120		
<b>Environmental and Occupational Health</b>												
3-Term	•				30/60	2.5	Undergraduate degree in a relevant discipline	70	6.0	95	3.0	<ul style="list-style-type: none"> <li>B or higher grades in all graduate level classes</li> <li>B or higher grade in all English language classes OR TOEFL 91 (18 subscores) OR IELTS 7.0</li> <li>Earn at least 15 graduate-level credits</li> </ul>

Entry and progression requirements are subject to change and may vary by program.  
<sup>1</sup>Departments may be looking for specific prerequisite courses in determining relevant undergraduate degree for admissibility to the Graduate Pathway Program.



# Academic English

Our Academic English program prepares you for a university degree by improving your English language skills and providing you with the academic tools you need to succeed. Students like you will learn English in and out the of the classroom and you will be taught by our qualified and experienced faculty. You will have opportunities to practice your English with native speakers during your everyday life. On top of that, you will receive customized support for international students to help you transition to life at a US university.

## What You Will Learn

- Understand US values in an academic setting
- Present spoken and written ideas accurately and effectively in English
- Write research papers with proper use of citations and references
- Read, understand and critically evaluate academic texts
- Understand and use vocabulary common to academic disciplines
- Take useful and accurate notes in academic lectures and presentations

## Estimated Academic English Level Based on Test Scores

The table below shows what your estimated level of AE will be if you submit standardized test scores with your application. Students will be tested during orientation to determine their final AE level placement.

Estimated AE Level	TOEFL iBT	IELTS
2	32-44	3.5-4.0
3	45-59	4.5-5.0
4	60	5.5
5	70	6.0
6	80	6.5



## Guaranteed Level

If you score lower on the placement test than your estimated level based on standardized tests, you are guaranteed to be placed no more than one level lower than your estimated level. If you score higher than your estimated level, you will be placed according to your placement test score.

## Academic Study Plan Calculator

Our Academic Study Plan Calculator will help you estimate your study plan. Simply add your academic program and English scores and receive an estimated study plan showing your duration of study.

<https://estimateus.intostudy.com>

## Key Program Facts

- Each term is 11 weeks
- High school diploma required
- No English language requirement; students assessed and placed upon arrival
- Minimum age 16
- 7 levels of instruction from true beginner to advanced
- 18 hours of instruction per week

## Progression Requirements

Must meet academic entry requirements for desired program

### International Year One/Undergraduate Transfer Program 4-Term

Completion of AE Level 3 with C/Pass or higher in all classes

### International Year One/Undergraduate Transfer Program 3-Term

Completion of AE Level 4 with C/Pass or higher in all classes

### Undergraduate Transfer Program 2-Term

Completion of AE Level 5 with C/Pass or higher in all classes

### Undergraduate Transfer Program 1-Term

Completion of AE Level 6 with C/Pass or higher in all classes

### Graduate Pathway 3-Term

Completion of AE Level 5 with C/Pass or higher in all classes

### Graduate Pathway 2-Term

Completion of AE Level 6 with a C+/Pass or higher in all classes

### Undergraduate first-year students

Completion of AE Level 5 with C/Pass or higher in all classes

### Direct Transfer Undergraduate

Completion of AE Level 6 with C/Pass or higher in all classes

### Direct Entry Graduate

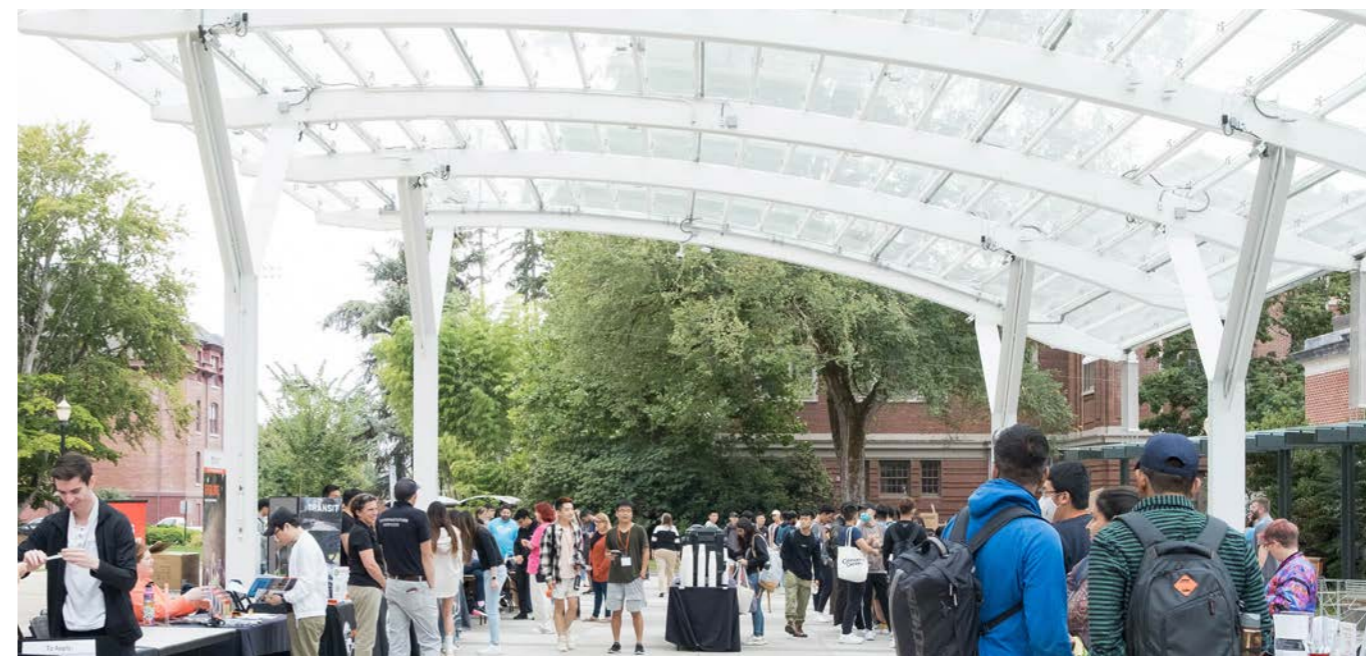
Completion of AE Level 6 with B/Pass or higher in all classes. Please verify with the graduate program if AE is considered as an English entry requirement. To find your program's contact, visit [gradschool.oregonstate.edu/programs](https://gradschool.oregonstate.edu/programs). Application deadlines vary and additional requirements may be needed depending on program.

## Start Dates

Fall 2022	Winter 2023	Spring 2023	Summer 2023
Sep 20, 2023	Jan 3, 2024	Mar 27, 2024	Jun 18, 2024

Find out more at

[www.intostudy.com/osu/academic-english](https://www.intostudy.com/osu/academic-english)



# Study Abroad with English (SAWE)

Study Abroad with English combines Academic English and OSU undergraduate classes. You will earn college credits in your field of interest without enrolling in a long-term degree. The program is customized for your English level and academic interest. Courses are available in liberal arts, business, engineering, public policy and the sciences.

## Program Overview

**Part 1:** Academic English

**Part 2:** Academic English Classes and OSU Classes

## Key Program Facts

Each term is 11 weeks | Minimum age 16

High school diploma required with 2.5 GPA or completion of at least one year of study at a university overseas with a minimum 2.25 GPA

**Part 1: No English language requirement**

### Part 2 English language requirement

TOEFL iBT 60 or | IELTS 5.5 or | Duolingo 90 or

Completion of Level 4 with minimum C/Pass grades in Study Abroad with English Part 1 or Academic English

Find out more at

[www.intostudy.com/osu/study-abroad-with-english](https://www.intostudy.com/osu/study-abroad-with-english)

## Start Dates

Program	Fall 2023	Winter 2024	Spring 2024	Summer 2024
Study Abroad with English Part 1	Sep 20, 2023	Jan 3, 2024	Mar 27, 2024	Jun 18, 2024
Study Abroad with English Part 2				
Visiting International Student Program				

# Visiting International Student Program (VISP)

Experience life on an American college campus while taking OSU credit-bearing classes as a non-degree student for up to one year. You will have access to OSU courses in liberal arts, business, engineering, public policy and the sciences. Other courses may be available on a case-by-case basis.

## Key Program Facts

Each term is 11 weeks | Minimum age 16

High school diploma required with 3.0 GPA or completion of at least one year of study at a university overseas with a minimum 2.25 GPA

## English language requirement

TOEFL iBT 80 (minimum 16 subscores) or | IELTS 6.5 or | Duolingo 110 or

Completion of Level 6 with a minimum C/Pass grades in Academic English or Completion of ALS 161 & ALS 162 with a minimum of C-/ Pass grades in Study Abroad with English Part 2.

Learn more at

[www.intostudy.com/osu/visiting-international-student-program](https://www.intostudy.com/osu/visiting-international-student-program)

<https://admissions.oregonstate.edu/international/programs/short-term-study-abroad-programs>

Invest in your degree.  
Invest in your future.  
Invest in you.

With a strong foundation and on-the-job experiences, your education can determine how far you go in your career. Based on your program, you will receive the level of support that corresponds to your academic profile, English language scores and budget.

Whether you're enrolled as an undergraduate first-year student or in our International Year One and Graduate Pathway programs, Undergraduate Transfer Program, Academic English or Master's International Direct programs, you will have access to our Pre-arrival Success Services and airport pickup when you arrive. You can also enjoy continued housing and meal options during university holidays and breaks.

## Programs

OSU offers four terms per year (Fall, Winter, Spring, Summer). Each term is around 11 weeks or three months long.

**Undergraduate** Undergraduate programs include undergraduate first-year students (UG first-year), International Year One (IYO) and Undergraduate Transfer Program (UTP)

	UTP	UTP	UG first-year, IYO, UTP	IYO, UTP
<b>Program Length</b>	<b>1 Term</b>	<b>2 Terms</b>	<b>3 Terms</b>	<b>4 Terms</b>
<b>Tuition and Fees</b>	<b>\$14,210</b>	<b>\$28,430</b>	<b>\$37,000</b>	<b>\$44,080</b>
<b>Housing and Meals*</b>	\$4,760	\$9,520	\$14,280	\$19,040
<b>Insurance</b>	\$1,440	\$2,880	\$4,320	\$5,760

**Graduate** Graduate programs include Pathway, Master's International Direct (MID) and Direct Entry.

	Pathway			Pathway-MBA and MSB			MID	MID (MSB)	Direct Entry engineering	Direct Entry MBA
<b>Program Length</b>	<b>1 Term</b>	<b>2 Terms</b>	<b>3 Terms</b>	<b>1 Term<sup>3</sup></b>	<b>2 Terms</b>	<b>3 Terms</b>	<b>1 Term</b>	<b>1 Term</b>	<b>3 Terms<sup>1</sup></b>	<b>3 Terms<sup>2</sup></b>
<b>Tuition and Fees</b>	<b>\$12,570</b>	<b>\$25,130</b>	<b>\$32,850</b>	<b>\$16,550</b>	<b>\$33,100</b>	<b>\$43,170</b>	<b>\$12,570</b>	<b>\$16,550</b>	<b>\$33,460</b>	<b>\$43,140</b>
<b>Insurance</b>	\$1,440	\$2,880	\$4,320	\$1,440	\$2,880	\$4,320	\$1,440	\$1,440	\$4,320	\$4,320

## Academic English

	Academic English/ Study Abroad with English Part 1	Visiting International Student Program/Study Abroad with English Part 2
<b>Program Length</b>	<b>1 Term</b>	<b>1 Term</b>
<b>Tuition and Fees</b>	<b>\$6,130</b>	<b>\$12,335</b>
<b>Housing and Meals*</b>	\$4,760	\$4,760
<b>Insurance</b>	\$1,720	\$1,720

## Campus housing

**Undergraduate, Graduate and Academic English**

Triple suite-style rooms: **\$4,760/term**

On-Campus housing prices includes the following amenities:

- \$950 meal plan per term
- 20% off at all on-campus dining locations
- Housing during breaks and holidays
- Laundry services
- Wi-Fi and all other utilities
- PDX shuttle service for first-time arrival
- Sheets, bedding, pillow and towels
- Welcome bag with snack for your arrival
- Residential, academic and cleaning/maintenance staff
- 24-hour arrival and move-in support

\*Housing and meals are based on estimated costs and may vary depending on housing and meal plans selected and personal preference.

<sup>1</sup>Based on 12 credits per term <sup>2</sup>Based on 9 credits per term <sup>3</sup>1-term Graduate Pathway is MBA only

**Are you an F-1 student?** You will need to provide proof of funding in order to get your I-20. Proof of funding is a way a student shows they have sufficient funds (usually via a recent bank statement) to live and study full-time in the US for up to one academic year. This is different from the cost of attendance OR a statement of account. The proof of funding amount will not be an amount that is billed to you and is solely for immigration purposes. To find out more about proof of finances for immigration purposes, visit [www.intostudy.com/en/osu/costs](http://www.intostudy.com/en/osu/costs)

All prices are estimated from 2022-23 and are subject to change. Please visit [www.intostudy.com/en/osu/costs](http://www.intostudy.com/en/osu/costs) for exact pricing.

What do students get out of campus housing? Enrich your US university experience by living on campus. See page 5.

For details about Terms and Conditions, Country Scales and English Waivers, visit [www.intostudy.com/osu/terms](http://www.intostudy.com/osu/terms)

## Scholarships

Find out more about scholarships [www.intostudy.com/osu/scholarships](http://www.intostudy.com/osu/scholarships)

Undergraduate programs: International Year One (IYO), Undergraduate Transfer (UTP) and undergraduate first-year students (UG first-year)  
Graduate programs: Graduate Pathway (GPW), Master's International Direct (MID) and Direct Entry

Program Group <sup>1</sup>	Scholarship Name	Amount	Duration	Eligibility & Learn More	Tuition	Maximum Scholarship Available	Annual Net Tuition with Scholarship <sup>2</sup>		
UG first-year, IYO	Regional Awards	Africa	\$12,000 per year (\$48,000 total)	Up to 4 years (renewable)	<ul style="list-style-type: none"> <li>• No scholarship application required, qualified applicants automatically awarded with offer</li> <li>• Applicable to undergraduate first-year and International Year One enrollments</li> <li>• Awarding region is based on country of residence</li> <li>• Students on government scholarships or sponsored by an external entity are not eligible for this award</li> <li>• Renewable as long as student remains in good academic standing, maintaining a GPA 3.0+</li> <li>• Can be combined with Regional Awards for undergraduate first-year and IYO students</li> <li>• Additional regional scholarships may be combined with these awards</li> <li>• Contact your INTO regional staff or OSU representative for more information</li> <li>• View the countries included in each region by emailing <a href="mailto:international.scholarships@oregonstate.edu">international.scholarships@oregonstate.edu</a></li> </ul>	\$37,000	\$12,000	<b>\$25,000</b>	
		Europe and Central Asia	\$12,000 per year (\$48,000 total)				\$10,000	<b>\$27,000</b>	
		Latin America	\$10,000 per year (\$40,000 total)				\$8,000	<b>\$29,000</b>	
		South Asia	\$10,000 per year (\$40,000 total)				\$2,000	<b>\$35,000</b>	
		Southeast Asia and IndoChina	\$8,000 per year (\$32,000 total)						
		Hong Kong and Macau	\$8,000 per year (\$32,000 total)						
		Taiwan	\$2,000 per year (\$8,000 total)						
Undergraduate	UG first-year, IYO, UTP, Direct Entry Transfer	Provost's Scholarships for Excellence	\$6,000 per year (\$24,000 total)	Up to 4 years (renewable)	\$37,000	\$6,000	<b>\$31,000</b>		
		Honors College Scholarship	\$1,500 per year (Up to \$6,000 total)	Up to 4 years (renewable)				\$1,500	Covers 100% of the additional tuition cost for Honors College
		Regional Scholarships	\$1,000-\$8,000 per year	One time on the first year/term				\$8,000	<b>\$29,000</b>
		Continued Success Scholarship	\$3,000-\$5,000 per year (\$9,000-\$15,000 total)	Up to 3 years (renewable)				\$5,000	<b>\$32,000</b>
		Honorary Scholarship for Leadership	\$2,000 total	One time on the first year/term				\$2,000	<b>\$35,000</b>
Graduate	GPW, MID	Regional Scholarships	\$1,000-\$7,500 per year	One time on the first year/term	\$32,850	\$7,500	<b>\$25,350<sup>3</sup></b>		
		Continued Success Scholarship	\$3,000-\$5,000 per year (\$6,000-\$10,000 total)	Up to 2 years (renewable)				\$5,000	<b>\$27,850<sup>3</sup></b>

**On-Campus Jobs:** As an international student at OSU, you can work up to 20 hours per week in one of the many on-campus jobs in the dining halls, sports facilities, Memorial Union Building and more. Students in Oregon receive at or above minimum wage (approx. \$13-\$15/hour) and typically earn \$8,000-\$12,000 per calendar year. This is a great way to learn valuable employment skills and reduce tuition costs."

All scholarships are subject to change.

Scholarship awards may be lower in value than those published here. Scholarship values presented here are based on achieving the highest award available.

Scholarships are subject to limited availability, deadlines and other terms and conditions. Please check with your INTO regional office or refer to your scholarship letter for more details.

Student on government scholarships or sponsored by an external entity may not be eligible for some of these scholarships.

1 Program Group relates to the initial program enrolled to qualify for this scholarship.

2 Net Tuition is an estimate based on the highest scholarship award applied to the first year of a student's tuition or upon progression.

3 Based on Graduate Non-Business/MBA programs.

# HOW TO APPLY

Choose from two easy ways to apply

**1** Apply via your local INTO educational counselor

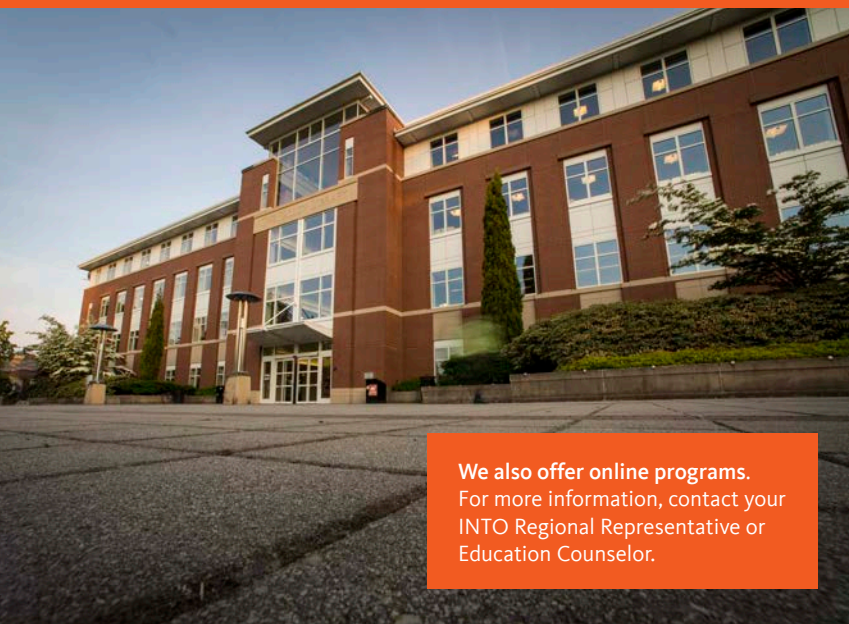
**2** Apply online  
Complete our online application form:

INTO OSU Programs:  
[apply.intostudy.com/osu](http://apply.intostudy.com/osu)

Undergraduate Admissions:  
[apply.intostudy.com/osu](http://apply.intostudy.com/osu)

Direct Graduate:  
[oregonstate.force.com/GradAppLogin](http://oregonstate.force.com/GradAppLogin)

Master's International Direct:  
[apply.intostudy.com/osu](http://apply.intostudy.com/osu)



We also offer online programs. For more information, contact your INTO Regional Representative or Education Counselor.



## INTO Oregon State University

Oregon State University  
1701 SW Western Boulevard  
Corvallis, OR 97333  
USA

T: +1 541 737 2464  
F: +1 541 737 4220  
E: [intladmit@oregonstate.edu](mailto:intladmit@oregonstate.edu)

[www.intostudy.com/osu](http://www.intostudy.com/osu)

PATHWAY ADMISSION  
[www.intostudy.com/osu](http://www.intostudy.com/osu)

DIRECT ADMISSION  
[admissions.oregonstate.edu/international](http://admissions.oregonstate.edu/international)



For more information on International Admissions, scan here:

 [facebook.com/INTO.oregonstate](https://facebook.com/INTO.oregonstate)

 [twitter.com/INTO\\_OSU](https://twitter.com/INTO_OSU)

 [instagram.com/INTOoregonstate](https://instagram.com/INTOoregonstate)

 [myin.to/OSU\\_YouTube](https://myin.to/OSU_YouTube)



WeChat



YOU VISIT VIRTUAL TOUR  
[www.youvisit.com/tour/oregonstate](http://www.youvisit.com/tour/oregonstate)



Through innovative partnerships with leading universities, we expand opportunities for higher education, ensuring success and transforming the lives of our students and staff.



Working across the globe, INTO Giving supports projects that increase access to education and improve the quality of teaching and learning. For more information, visit [www.into-giving.com](http://www.into-giving.com)

## Discover more online

For counselors:  
[partnerportal.intoglobal.com/osu](http://partnerportal.intoglobal.com/osu)

For students:  
[www.intostudy.com/osu](http://www.intostudy.com/osu)

## Connect with us



Education counselor's stamp